



MEDBOURNE NEIGHBOURHOOD PLAN

Referendum Version - May 2018

Appendix 4a

Census Data

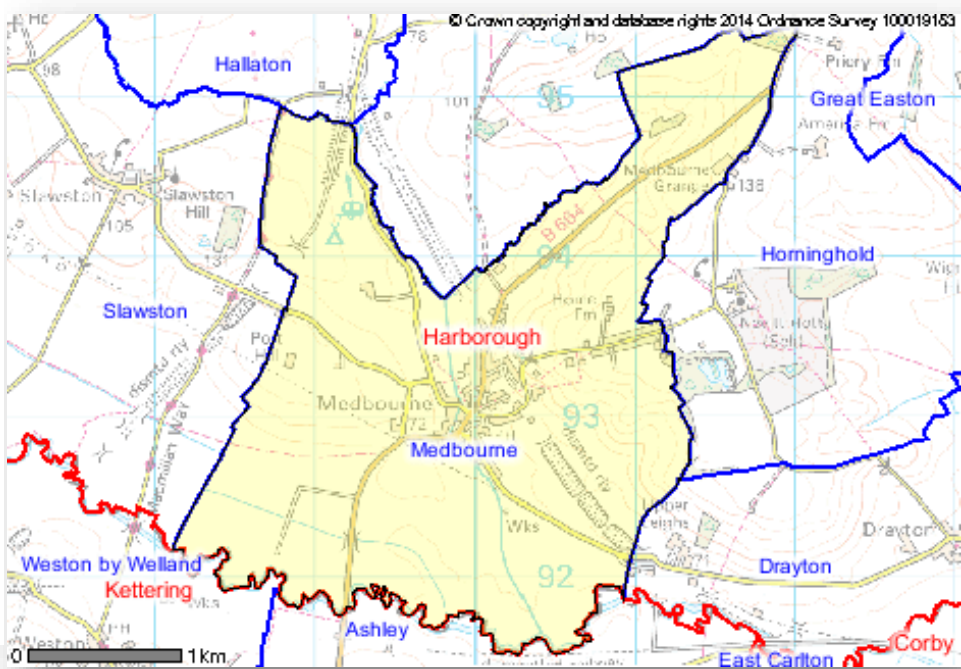
hyperlinked from main document
Medbourne Neighbourhood Plan

[CLICK HERE TO RETURN](#)

Medbourne Parish Census 2011 Profile

This Parish Profile presents data from the 2011 Census which took place on 27th March 2011.

It provides comparisons against the borough, region and England averages.



	Medbourne		Harborough	East Midlands	England
	No	%	%	%	%
USUAL RESIDENTS BY AGE BAND					
Aged 0-4	26	5.5	5.5	6.0	6.3
Aged 5-15	57	12.1	13.7	12.5	12.6
Aged 16-64	306	64.7	62.6	64.5	64.8
Aged 65+	84	17.8	18.3	17.1	16.3
All Usual Residents	473	100.0	100.0	100.0	100.0
ETHNIC GROUP					
White	463	97.9	95.2	89.3	85.4
Mixed/Multiple Ethnic groups	2	0.4	1.1	1.9	2.3
Asian	8	1.7	3.0	6.5	7.8
Black	-	0.0	0.4	1.8	3.5
Other Ethnic Groups	-	0.0	0.2	0.6	1.0
All Usual Residents	473	100.0	100.0	100.0	100.0
RELIGION					
Christian	331	70.0	65.5	58.8	59.4
Buddhist	-	-	0.2	0.3	0.5
Hindu	5	1.1	1.3	2.0	1.5
Jewish	1	0.2	0.1	0.1	0.5
Muslim	-	-	0.5	3.1	5.0
Sikh	-	-	0.7	1.0	0.8
Other Religion	1	0.2	0.2	0.4	0.4
No Religion	105	22.2	24.6	27.5	24.7
Religion Not Stated	30	6.3	6.9	6.8	7.2
All Usual Residents	473	100.0	100.0	100.0	100.0
HIGHEST LEVEL OF QUALIFICIATION					
No Qualifications	60	15.4	18.1	24.7	22.5
Level 1 Qualifications	43	11.0	13.3	13.9	13.3
Level 2 Qualifications	50	12.8	16.3	15.6	15.2
Apprenticeship	13	3.3	4.6	4.0	3.6
Level 3 Qualifications	48	12.3	12.1	12.9	12.4
Level 4 Qualifications and Above	160	41.0	31.8	23.6	27.4
Other Qualifications	16	4.1	3.8	5.3	5.7
All Usual Residents Aied 16 and Over	390	100.0	100.0	100.0	100.0
ECONOMIC ACTIVITY & INACTIVITY					
All Usual Residents Aged 16 to 74	348				
<i>Economically Active Total</i>	253	72.7	74.0	69.3	69.9
Employee, Full-time	99	28.4	40.9	38.8	38.6
Employee, Part-time	47	13.5	15.2	14.4	13.7
Self Employed	94	27.0	12.9	8.7	9.8
Unemployed	8	2.3	2.5	4.2	4.4
Full-time Student (economically active)	5	1.4	2.5	3.3	3.4
<i>Economically inactive Total</i>	95	27.3	26.0	30.7	30.1
Retired	50	14.4	15.5	15.0	13.7
Student (including Full-Time Students)	19	5.5	3.9	5.8	5.8
Looking After Home or Family	17	4.9	3.0	4.0	4.4
Long-Term Sick or Disabled	4	1.1	2.0	4.1	4.0
Other	5	1.4	1.7	1.9	2.2

	Medbourne		Harborough	East Midlands	England
	No	%	%	%	%
METHOD OF TRAVEL TO WORK					
Work Mainly at or From Home	40	11.5	5.7	3.3	3.5
Underground, Metro, Light Rail, Tram	3	0.9	0.1	0.2	2.6
Train	8	2.3	1.4	0.9	3.5
Bus, Minibus or Coach	2	0.6	1.4	4.0	4.9
Taxi	-	0.0	0.1	0.3	0.3
Motorcycle, Scooter or Moped	2	0.6	0.4	0.5	0.5
Driving a Car or Van	165	47.4	50.3	42.2	36.9
Passenger in a Car or Van	5	1.4	3.0	3.9	3.3
Bicycle	1	0.3	1.5	1.8	1.9
On Foot	15	4.3	6.9	7.1	6.9
Other Method of Travel to Work	4	1.1	0.4	0.3	0.4
Not in Employment	103	29.6	28.8	35.7	35.3
All Usual Residents Aged 16 to 74	348	100.0	100.0	100.0	100.0
HEALTH					
Very Good Health	275	58.1	50.9	45.3	47.2
Good Health	140	29.6	34.3	35.1	34.2
Fair Health	45	9.5	11.4	14.0	13.1
Bad Health	11	2.3	2.7	4.3	4.2
Very Bad Health	2	0.4	0.8	1.2	1.2
All Usual Residents	473	100.0	100.0	100.0	100.0
Long-Term Health Problem or Disability					
Day-to-Day Activities Limited a Lot	24	5.1	5.9	8.7	8.3
Day-to-Day Activities Limited a Little	41	8.7	8.6	9.9	9.3
Day-to-Day Activities Not Limited	408	86.3	85.4	81.4	82.4
All Usual Residents	473	100.0	100.0	100.0	100.0
Provision of Unpaid Care					
Provides No Unpaid Care	416	87.9	89.5	89.2	89.8
Provides 1 to 19 Hours Unpaid Care a Week	47	9.9	7.7	6.9	6.5
Provides 20 to 49 Hours Unpaid Care a Week	5	1.1	1.1	1.4	1.4
Provides 50 or More Hours Unpaid Care a Week	5	1.1	1.8	2.5	2.4
All Usual Residents	473	100.0	100.0	100.0	100.0
HOUSEHOLDS AND HOUSEHOLD SPACES					
All Household Spaces	205	100.0	100.0	100.0	100.0
Household Spaces With At Least One Usual Resident	199	97.1	96.6	96.0	95.7
Household Spaces With No Usual Residents	6	2.9	3.4	4.0	4.3
TENURE					
All occupied Households	199	100.0	100.0	100.0	100.0
Owned; Owned Outright	84	42.2	38.4	32.8	30.6
Owned; Owned with a Mortgage or Loan	70	35.2	39.7	34.5	32.8
Shared Ownership (Part Owned and Part Rented)	-	0.0	1.2	0.7	0.8
Social Rented; Rented from Council (Local Authority)	3	1.5	1.4	10.1	9.4
Social Rented; Other	18	9.0	7.0	5.7	8.3
Private Rented; Private Landlord or Letting Agency	19	9.5	10.1	13.6	15.4
Private Rented; Other	1	0.5	1.1	1.3	1.4
Living Rent Free	4	2.0	1.1	1.3	1.3
ACCOMMODATION TYPE					
All occupied households	199	100.0	100.0	100.0	100.0
Detached	107	53.8	48.4	32.5	22.4
Semi-Detached	56	28.1	28.9	35.5	31.2
Terraced	26	13.1	15.1	20.4	24.5
Flat, Maisonette or Apartment	9	4.5	7.2	11.1	21.2
Caravan or Other Mobile or Temporary Structure	1	0.5	0.4	0.4	0.4
Shared dwellings	-	0.0	0.0	0.1	0.4
NUMBER OF BEDROOMS					
All Household Spaces With At Least One Usual Resident	199	100.0	100.0	100.0	100.0
No Bedrooms	-	0.0	0.1	0.2	0.2
1 Bedroom	9	4.5	5.8	8.1	11.8
2 Bedrooms	29	14.6	22.5	26.5	27.9
3 Bedrooms	76	38.2	37.3	45.4	41.2
4 Bedrooms	51	25.6	25.7	15.4	14.4
5 or More Bedrooms	34	17.1	8.5	4.4	4.6

	Medbourne		Harborough	East Midlands	England
	No	%	%	%	%
DEPRIVATION					
All occupied Households	199	100.0	100.0	100.0	100.0
Household is Not Deprived in Any Dimension	111	55.8	54.1	42.8	42.5
Household is Deprived in 1 Dimension	68	34.2	30.5	32.4	32.7
Household is Deprived in 2 Dimensions	17	8.5	13.4	19.6	19.1
Household is Deprived in 3 Dimensions	2	1.0	2.0	4.8	5.1
Household is Deprived in 4 Dimensions	1	0.5	0.1	0.4	0.5
HOUSEHOLD SIZE					
All Household Spaces With At Least One Usual Resident	199	100.0	100.0	100.0	100.0
1 Person in Household	49	24.6	25.8	29.0	30.2
2 People in Household	77	38.7	37.5	36.2	34.2
3 People in Household	33	16.6	15.2	15.6	15.6
4 People in Household	31	15.6	15.2	12.9	13.0
5 People in Household	8	4.0	4.8	4.3	4.7
6 People in Household	1	0.5	1.1	1.4	1.7
7 People in Household	-	-	0.2	0.3	0.4
8 or More People in Household	-	-	0.1	0.2	0.3
CAR OR VAN AVAILABILITY	199				
All occupied Households	199	100.0	100.0	100.0	100.0
No Cars or Vans in Household	11	5.5	11.8	22.1	25.8
1 Car or Van in Household	56	28.1	37.5	42.5	42.2
2 Cars or Vans in Household	93	46.7	37.9	27.4	24.7
3 Cars or Vans in Household	29	14.6	9.3	6.0	5.5
4 or More Cars or Vans in Household	10	5.0	3.5	2.0	1.9
All Cars or Vans in Area	374				

Source: Office for National Statistics licensed under the Open Government Licence v.3.0.

The data in this profile is derived from the following tables c/o Office for National Statistics Neighbourhood Statistics website and is subject to Crown Copyright.

Economic Activity, 2011 (QS601EW); Tenure, 2011 (KS402EW); Religion, 2011 (KS209EW); Accommodation Type - Households, 2011 (QS402EW); Number of Bedrooms, 2011 (QS411EW); Provision of Unpaid Care, 2011 (QS301EW); Households by Deprivation Dimensions, 2011 (QS119EW); Age Structure, 2011 (KS102EW); Tenure - Households, 2011 (QS405EW); Household Size, 2011 (QS406EW); Ethnic Group, 2011 (QS201EW); Long-Term Health Problem or Disability, 2011 (QS303EW); Car or Van Availability, 2011 (QS416EW); Method of Travel to Work, 2011 (QS701EW); Household Spaces, 2011 (QS417EW); General Health, 2011 (QS302EW); Highest Level of Qualification, 2011 (QS501EW)